

Wind Auditions
Symphonic Band, Concert Band,
Orchestral Winds, and Chamber Orchestra Winds

Auditions will be held on Tuesday, January 7, 2020 from 6-9pm in the Couch building. You may sign up for an audition time on the concert band bulletin board on the first floor of Couch.

Auditions will consist of:

3 chromatically adjacent scales

Chromatic scale- full range

Prepared music

No Sight Reading

There are 3 prepared excerpts for each instrument. You only need to play excerpt #1 to audition for Concert Band. In order to audition for Symphonic Band or Orchestra, you must play **BOTH** excerpt #2 and #3. On each excerpt, you are expected to play the sections between the brackets.

Rehearsal Times:

Concert Band- Tuesday/Thursday - 3:00pm-4:15pm

Symphonic Band- Tuesday/Thursday - 4:30pm-5:45pm

Orchestra- Tuesday/Thursday - Noon-1:15pm

Chamber Orchestra- Tuesday/Thursday – 1:30-2:45pm

If you have any questions regarding Symphonic Band or Concert Band, please e-mail Professor Diden at benjamin.diden@music.gatech.edu

If you have any questions regarding Symphony Orchestra or Chamber Orchestra, please e-mail Dr. Ting at chaowen.ting@music.gatech.edu

$\text{♩} = 86$ (in one)

Trombone #1

Trombone 1,2

Mother Earth Fanfare -
Maslank 9

171 **5** **180** **4**

190 **200** **210** **220** **230** **240** **250**

251 **260** **270** **280**

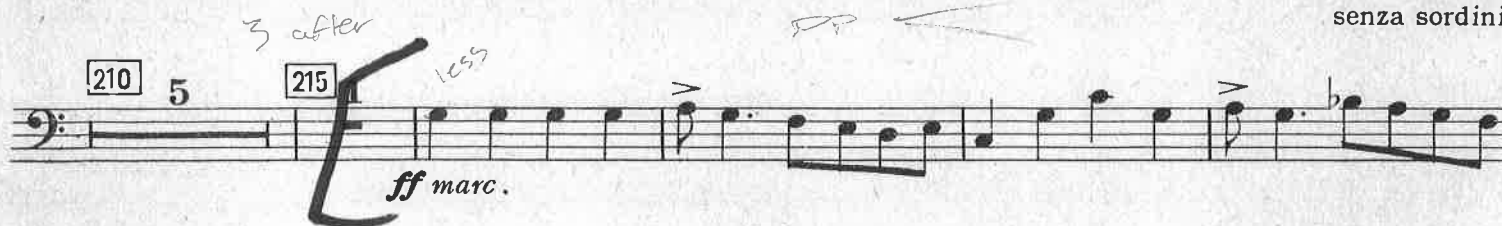
ff *sim.* *slowing...* *in tempo* *ff* *p* *slowing* *in tempo* *2.*

a2 *1.* *2.*

Copland - Outdoor Overture

1st Trombone

Trombone #2



Richard Wagner

Der Fliegende Holländer

(The Flying Dutchman)

1

Allegro con brio. $\text{♩} = 72$. **Posaune I. (Trombone I.)**

The score for Trombone I (Posaune I.) is written in B-flat major (two flats) and 4/4 time. The tempo is **Allegro con brio** with a metronome marking of $\text{♩} = 72$. The score is divided into measures 1 through 14. Key performance instructions include:

- Measure 1:** *f* **molto marc.** (marked with a fermata).
- Measure 2:** *ff*.
- Measure 3:** *ff*.
- Measure 4:** *ff*.
- Measure 5:** *ff*.
- Measure 6:** *ff*.
- Measure 7:** *ff*.
- Measure 8:** *ff*.
- Measure 9:** *ff*.
- Measure 10:** *ff*.
- Measure 11:** *ff*.
- Measure 12:** *ff*.
- Measure 13:** *ff*.
- Measure 14:** *ff*.

Other markings include **Andante** (measures 10-11), **Animando un poco** (measure 12), **Tempo I.** (measure 13), and **molto animato** (measure 14). Dynamics range from *pp* to *ff*. The score also includes a **Viol.** part in the first measure and a **Fl.** part in the fifth measure.